



THE MAD-RAMPS PIVOTING RAMP SYSTEM OWNER'S MANUAL

**Please read this manual entirely prior to assembly or operation of
The MAD-RAMPS Pivoting Ramp System. Please call us at
1 (844) MAD-RAMP with any questions.**

Please visit <https://www.youtube.com/watch?v=2RjXaKkHmiM> for the video version of these
installation instructions.

MR1400 MAD-RAMPS Pivoting Ramp System

Installation Instructions

GENERAL SAFETY RULES

⚠ WARNING: Never exceed truck manufacturer's maximum tongue-weight rating or truck's payload capacity. Vehicle specific information can be found in your truck's owner's manual.

⚠ WARNING: When using the MAD-RAMPS Pivoting Ramp System, basic safety precautions should always be followed to reduce the risk of personal injury or damage to your equipment.

⚠ WARNING: During the loading and unloading processes, all persons must stand clear of the MAD-RAMPS Pivoting Ramp System. Make sure no persons or animals are under/near the ramps or truck bed when loading and unloading your machine.

Reminder: All loading and unloading must be done on a flat, level, and dry surface.

⚠ WARNING: Prior to each use, check for any worn, loose, or damaged components on the MAD-RAMPS Pivoting Ramp System. If any damage is present, **DO NOT USE THE RAMPS.**

⚠ WARNING: Do not add to or modify the MAD-RAMPS Pivoting Ramp System in any way. Any modifications will void all warranties and may affect the structural integrity of the MAD-RAMPS.

⚠ WARNING: Prior to each use, verify that all bolts on the MAD-RAMPS Pivoting Ramps System are properly torqued to 70 ft/lbs each. This routine inspection is required to ensure product components do not loosen or shift during use or transport.

PERSONAL SAFETY

- Avoid working alone. If an accident occurs, a second person can bring help.
- Keep your work area clean. Cluttered work areas can contribute to accidents.
- Observe work area conditions. Keep work area well lit at all times.
- Dress properly. Avoid wearing loose clothing or jewelry as they can get caught in moving parts.
- Do not overreach. Keep proper footing and balance at all times.
- Do not use MAD-RAMPS under the influence of drugs or alcohol. Read warning labels on prescription medication to determine if your judgment or reflexes may be impaired while taking medication. If there is any doubt, **DO NOT USE MAD-RAMPS.**
- All ATV/UTV/Snowmobile riders should always wear helmets, eye protection, and protective clothing.
- All ATV/UTV/Golf Cart/Snowmobile drivers should be at least 16 years old with valid drivers' licenses.

MR1400 MAD-RAMPS Pivoting Ramp System

Installation Instructions

INTENDED USE

The MAD-RAMPS Pivoting Ramp System is intended to load, unload, and transport ATVs, UTVs, Golf Carts, and Snowmobiles only. Depending on ATV/UTV/Golf Cart/Snowmobile weight, a minimum of a Class III or a Class IV receiver hitch is required for the MAD-RAMPS Pivoting Ramp System. It is imperative that you check your owner's manual to determine the tongue-weight rating for your truck's specific receiver hitch. Once you know your truck's specific tongue-weight rating, you will need to perform one quick calculation: Add together the total weight of the MAD-RAMPS Pivoting Ramp System (151 pounds) and two-thirds of the weight of your ATV, UTV, Golf Cart, or Snowmobile ($2/3 = \text{machine weight} \times 0.67$). After you have completed this calculation, you must make sure that the combined weight of the MAD-RAMPS Pivoting Ramp System and two-thirds of the weight of your ATV/UTV/Golf Cart/Snowmobile is less than the maximum tongue-weight rating for your truck's receiver hitch. If this combined weight is more than the maximum tongue-weight rating for your truck's receiver hitch, the MAD-RAMPS Pivoting Ramp System should NOT be used on your truck.

NOTE: When using the MAD-RAMPS Pivoting Ramp System with a Golf Cart, ensure there is enough ground clearance to safely drive the Golf Cart onto the ramps.

Furthermore, it is imperative that you closely inspect your truck's receiver hitch to determine whether it is in good working condition. You need to ensure that the structural integrity of your truck's receiver hitch has not been degraded from years of use or misuse, or from the use of highway salts and other degrading compounds that your truck may have encountered.

MAD-RAMPS are DOT compliant for highway travel in the United States. In order to maintain compliance, three straps must be used to secure your machine prior to transport. For maximum safety, it is recommended that ratchet straps be used to secure your machine for transport—two at the front of your ATV/UTV/Golf Cart/Snowmobile and one in the rear, as a minimum.

NOTE: When UTV/Side by Side exceeds 1,000 lbs dry weight, we recommend backing the machine on the MAD-RAMP. Due to the higher weight and continuous stress load on the MAD-RAMP we make this recommendation so that more weight is carried by the pickup and less transferred to the MAD-RAMP, which decreases the continuous load and helps maintain the strength and integrity of the unit.

MAINTENANCE

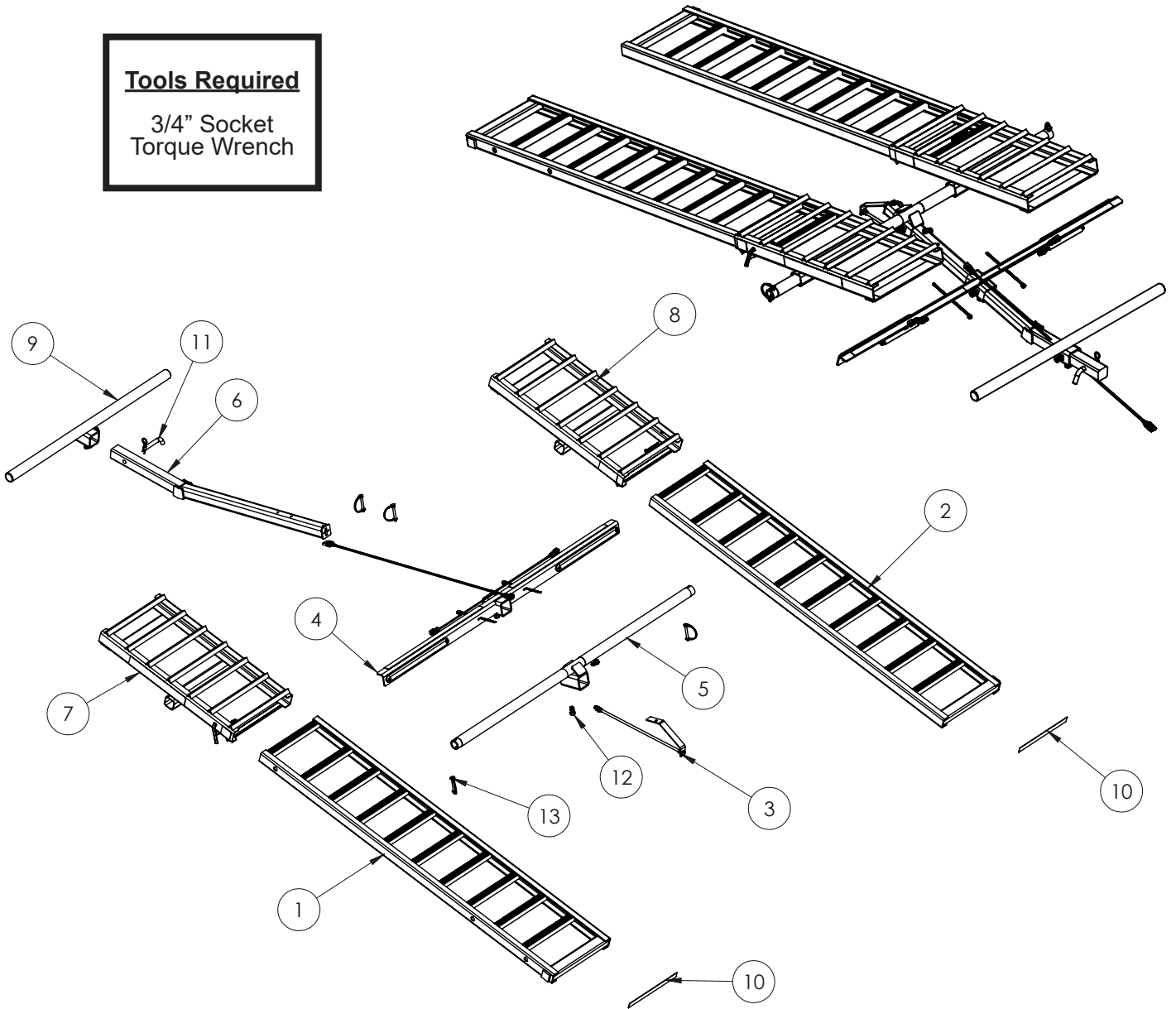
The MAD-RAMPS Pivoting Ramp System is free from any regular or scheduled maintenance. There are no bearings, grease fittings, lubrication points, etc. However, several sound practices will ensure the safety, longevity, and durability of your MAD-RAMPS for years to come.

- Keep all components clean and free from any mud or debris that can accumulate with regular use.
- Use a torque wrench to ensure all of the jam bolts are tightened to 70 ft/lbs each prior to each use.
- Periodically check to ensure proper function of brake lights, tail lights, and turn signals.
- When not in use for extended periods of time, store MAD-RAMPS indoors.

MR1400 MAD-RAMPS Pivoting Ramp System Installation Instructions

Tools Required

3/4" Socket
Torque Wrench



Item No.	Part No.	Description	Qty.
1.....	61-8273	Aluminum Ramps, DS	1
2.....	61-8274	Aluminum Ramps, PS	1
3.....	62-4259	Marker Light	1
4.....	62-4260	Light Bar	1
5.....	62-4261	Pivot Bar	1
6.....	62-4262	Main Arm	1
7.....	62-4263	Pivot Cage, DS	1
8.....	62-4264	Pivot Cage, PS	1
9.....	62-4265	Bumper Guard	1
10.....	192-0037	1" x 12" Red Reflective Tape	2
11.....	200-1483	5/8" x 3" Eff. Pin with Clip	1
12.....	201-1123	1/2"-13 x 1" Hex Head Bolt, Grade 5, ZP	6
13.....	229-1155	5/16" x 2-3/16"-2 Eff. Lgth Clevis Pin w/Wire Retainer	4

MR1400 MAD-RAMPS Pivoting Ramp System

Installation Instructions

MAD-RAMPS ASSEMBLY GUIDE

NOTE: All ½ inch jam bolts used for assembling the MAD-RAMPS Pivoting Ramp System must be torqued to 70 ft/lbs each. Please check jam bolts for proper torque after first use and periodically thereafter.

Step 1:

Start the assembly process with the tailgate of your truck in the up-right position. Pre-thread two of the provided jam bolts into the Bumper Guard (part #9), as shown in Figure 1. Slide the Bumper Guard onto the receiver end of the Main Arm (part #6), as shown in Figure 2. Then insert the Main Arm into your truck's receiver hitch. Secure the Main Arm into the receiver hitch with a pin and key (Figure 3). Adjustments to the Bumper Guard's position on the Main Arm will be made in a later step, so do not tighten the two jam bolts for the Bumper Guard at this time.



Figure 1



Figure 2



Figure 3

Step 2:

Pre-thread two of the provided jam bolts into the Light Bar (part #4), as shown in Figure 4. Slide the Light Bar onto the angled end of the Main Arm (part #6), approximately ½ of the way down the Main Arm (Figure 5). Adjustments to the Light Bar's position on the Main Arm will be made in a later step, so do not tighten the two jam bolts for the Light Bar at this time.



Figure 4



Figure 5

MR1400 MAD-RAMPS Pivoting Ramp System

Installation Instructions

Step 3:

Install a Retainer Clip into the 3rd hole from the angled end of Main Arm (part #6), as shown in Figures 6 and 7. Retainer clips are installed as a backup safety measure to prevent the Pivot Bar (part #5) from moving out of position on the Main Arm. Adjustments to the Pivot Bar and Retainer Clips may be required at a later step, depending on vehicle and machine configuration.

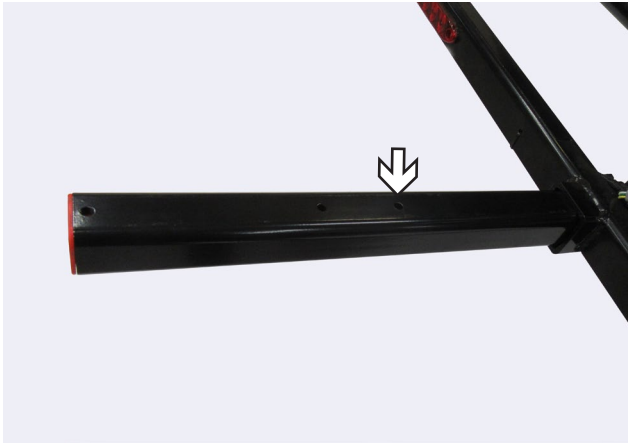


Figure 6



Figure 7

Step 4:

Pre-thread two of the provided jam bolts into the Pivot Bar (part #5), as shown in Figure 8. Slide the Pivot Bar onto the angled end of the Main Arm (part #6), as shown in Figures 9 and 10.



Figure 8



Figure 9



Figure 10

MR1400 MAD-RAMPS Pivoting Ramp System

Installation Instructions

Step 5:

NOTE: The Pivot Cages (part #7 and part #8) and the Aluminum Ramps (part #1 and part #2) are side-specific and not interchangeable.

Lower your tailgate into the down position. Slide the Driver-Side Pivot Cage (part #7) onto the Pivot Bar (part #5), as shown in Figure 11. Install a retainer clip into the Driver's side end of the Pivot Bar (Figure 12). Repeat the process for the Passenger-Side Pivot Cage (part #8).



Figure 11



Figure 12

There needs to be 4-6 inches of clearance between both Pivot Cages and your tailgate (Figure 13). To obtain a distance of 4-6 inches between the Pivot Cages and your tailgate, adjust the positioning of the Pivot Bar by sliding it forward or backward on the Main Arm (part #6). Check the Pivot Cages to make sure they do not come in contact with the tailgate. You can perform this check by swiveling the Cages through their entire range of motion. **The positioning of the Pivot Bar must be far enough back on the Main Arm to allow the rear tires of your ATV/ UTV to be positioned well-forward of the Pivot Bar once the ATV/UTV is loaded onto the MAD-RAMPS Pivoting Ramp System.**



Figure 13

MR1400 MAD-RAMPS Pivoting Ramp System

Installation Instructions

Once the Pivot Bar is positioned correctly, secure the Pivot Bar to the Main Arm by tightening the two jam bolts. Tighten the side jam bolt first and then the bottom jam bolt with a torque wrench to 70 ft/lbs each (Figure 14).

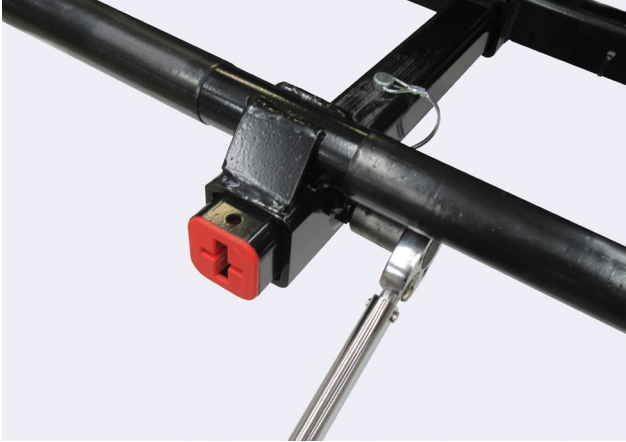


Figure 14

Once the Pivot Bar has been adjusted and secured, move the retainer clip installed in Step #3 to the hole closest to the front of the Pivot Bar (part #5), as shown in Figure 15.



Figure 15

MR1400 MAD-RAMPS Pivoting Ramp System

Installation Instructions

Step 6:

Adjust the Light Bar (part #4) to a position on the main arm that allows the front ends of the Pivot Cages (parts #7 and #8) to come to a rest on the Light Bar when the Pivot Cages are swiveled down into their cradle positions (Figures 16 and 17). Once the Light Bar is positioned correctly, secure the Light Bar to the Main Arm (part #6) by tightening the two jam bolts. Tighten the side jam bolt first and then the bottom jam bolt with a torque wrench to 70 ft/lbs each (Figure 18).



Figure 16



Figure 17



Figure 18

Step 7:

Insert the Passenger-Side Aluminum Ramp (part #2) into the rear of the Passenger-Side Pivot Cage (part #8), as shown in Figure 19. Ensure that the 3 pre-drilled holes on the side of the Passenger-Side Aluminum Ramp are facing toward the outside of the MAD-RAMPS Pivoting Ramp System; this allows for the spring tension pin on the Passenger-Side Pivot Cage to lock the Passenger-Side Aluminum Ramp into place when loading, unloading, and transporting your ATV/ UTV, as shown in Figure 20. Repeat the process with the Driver-Side Aluminum Ramp (part #1) and the Driver-Side Pivot Cage (part #7).



Figure 19



Figure 20

NOTE: The spring-tension pin on the Pivot Cages (part #7 and part #8) must **ALWAYS** be engaged and securely locked into place with the Aluminum Ramps (part #1 and #2) when the MAD-RAMPS Pivoting Ramp System is in use.

MR1400 MAD-RAMPS Pivoting Ramp System

Installation Instructions

Step 8:

Adjust the Bumper Guard (part #9) forward or backward on the Main Arm to allow the Aluminum Ramps (part #1 and #2) to travel through the Pivot Cages (part #7 and #8) and come to a rest just below the Bumper Guard (Figure 21). This adjustment prevents the Aluminum Ramps from excessive movement or contact with your truck's bumper during transportation. This adjustment also serves as a safety mechanism to prevent the Aluminum Ramps and the Pivot Cages from swiveling out of their cradle positions when you are transporting your ATV/UTV. Once the Bumper Guard is positioned correctly, secure the Bumper Guard to the Main Arm (part #6) by tightening the two jam bolts. Tighten the side jam bolt first and then the bottom jam bolt with a torque wrench to 70 ft/lbs each (Figure 22).



Figure 21



Figure 22

Step 9:

Install the Rear Marker Light (part #3) into the rear of the Main Arm (part #6), and align the pre-drilled holes to allow for the retainer clip to be inserted (Figure 23). Insert the retainer clip to secure the Rear Marker Light onto the Main Arm (Figure 24).



Figure 23



Figure 24

MR1400 MAD-RAMPS Pivoting Ramp System

Installation Instructions

Step 9 (Continued):

Thread the Rear Marker Light harness through the rings of the retainer clips in the Main Arm (part #6) to prevent the harness from sagging (Figure 25).



Figure 25

Using the male and female ends of the butt connectors, connect the Rear Marker Light harness at the center of the Light Bar (part #4), as shown in Figure 26.



Figure 26

MR1400 MAD-RAMPS Pivoting Ramp System

Installation Instructions

Step 10:

Plug in the light harness and then check the LED lights on the Light Bar to ensure proper operation of turn signals, brake lights, and tail lights (Figure 27). The MAD-RAMPS Pivoting Ramp System is equipped with a 4-way standard plug. An adapter may be required depending on your truck's wiring configuration.

Note: Test brake and turn signal lights after assembly. If the turn signals are reversed, the main harness may need to be disconnected on the light bar and the connection where the lights are plugged into swapped.



Figure 27

The MAD-RAMPS assembly is now complete. Check again to ensure that all jam bolts are properly tightened and torqued.

To view our MAD RAMPS Pivoting Ramp System installation video, visit:

<https://youtu.be/2RjXaKkHmiM>

MR1400 MAD-RAMPS Pivoting Ramp System Installation Instructions

MAD-RAMPS LOADING AND UNLOADING PROCEDURES

LOADING YOUR ATV OR UTV WITH MAD-RAMPS

Step 1:

Unlock and lower the tailgate on your truck. Extend the Driver-Side Aluminum Ramp by pulling the spring-tension pin to release the Driver-Side Aluminum Ramp from the Driver-Side Pivot Cage (Figure 1). Pull the ramp away from the truck until it is fully extended and the spring-tension pin is engaged with the pre-drilled hole in the aluminum ramp (Figure 2). Repeat the process with the Passenger-Side Aluminum Ramp and the Passenger-Side Pivot Cage.



Figure 1

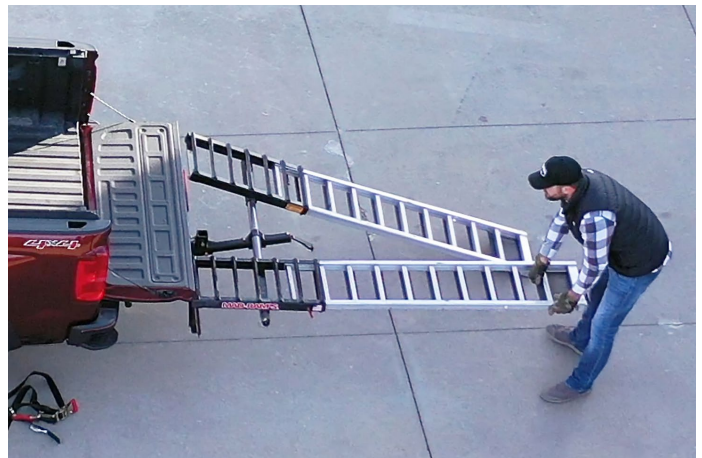


Figure 2

Step 2:

Drive your machine up to MAD-RAMPS, but stop before the front tires come in contact with either aluminum ramp. Adjust the ramps by them sliding along the Pivot Bar so they line up with the wheel width of your ATV or UTV, as shown in Figure 3.

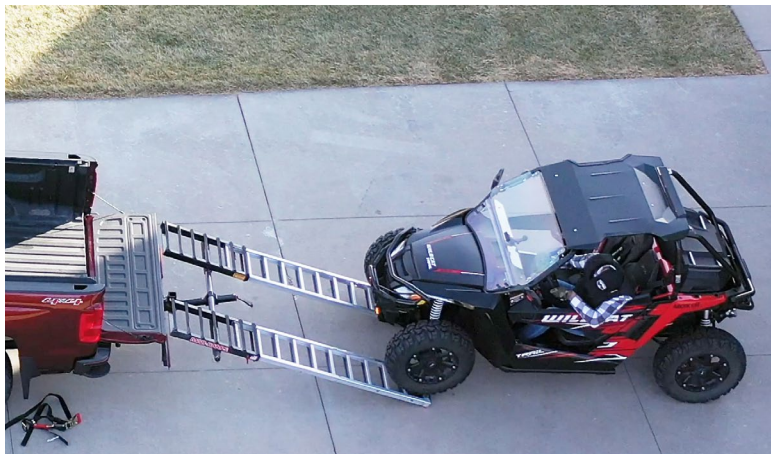


Figure 3

MR1400 MAD-RAMPS Pivoting Ramp System

Installation Instructions

Step 3:

Once the ramps are properly aligned, drive your ATV or UTV slowly onto the ramps and into the bed of your truck, stopping when the rear tires of your machine contact your truck's tailgate. A slow, steady ascent up the MAD-RAMPS Pivoting Ramp System allows for a smooth transition as your rear tires cross the Pivot Bar. Place your ATV or UTV in park, and engage the parking brake (if applicable). Figure 4 illustrates what your machine will look like when loaded properly.



Figure 4

Step 4:

Release the spring-tension pin from the Driver-Side Pivot Cage and slide the Driver-Side Aluminum Ramp down into one of the two travel positions. Make sure the spring-tension pin is engaged with the pre-drilled hole in the aluminum ramp. Repeat this process for the Passenger-Side Pivot Cage and the Passenger-Side Aluminum Ramp (Figure 5).



Figure 5

MR1400 MAD-RAMPS Pivoting Ramp System

Installation Instructions

Step 5:

NOTE: In order to be DOT compliant in all 50 states, a minimum of three straps of adequate capacity must be used to secure your machine prior to transport. For maximum safety, it is recommended that ratchet straps be used to secure your machine for transport.

Use a minimum of one ratchet strap to secure the rear end of your machine to the Main Arm of the MAD-RAMPS Pivoting Ramp System. Use a minimum of two additional ratchet straps to secure the front end of your machine to each of the two cargo hooks at the front of your truck's bed.

UNLOADING YOUR ATV OR UTV WITH MAD-RAMPS:

Step 1:

Remove all three (or more) of the ratchet straps used to securely transport your ATV or UTV.

STEP 2:

Release the Driver-Side Aluminum Ramp by pulling the spring-tension pin on the Driver-Side Pivot Cage. Fully extend the ramp, ensuring the spring-tension pin engages with the pre-drilled hole at the end of ramp (Figure 1). Repeat the process for the Passenger-Side Pivot Cage and the Passenger-Side Aluminum Ramp.



Figure 1

MR1400 MAD-RAMPS Pivoting Ramp System

Installation Instructions

Step 3:

NOTE: There is no need to adjust the ramps for wheel width prior to unloading. The weight of your machine holds the Pivot Cages and Aluminum Ramps in place during transportation.

Start your machine, and disengage the parking brake. Slowly reverse your machine over the Pivot Bar. This will allow for a smooth transition as the ramps lower to the ground (Figure 2). Continue to reverse until your front tires are completely off of the ramps.



Figure 2

MR1400 MAD-RAMPS Pivoting Ramp System

Installation Instructions

WARRANTY

LIMITED WARRANTY ON THE MAD-RAMPS PIVOTING RAMP SYSTEM

THIS LIMITED WARRANTY GIVES YOU SPECIFIC LEGAL RIGHTS AND YOU MAY ALSO HAVE OTHER RIGHTS, WHICH MAY VARY FROM STATE TO STATE.

WE WARRANT THAT, DURING THE WARRANTY PERIOD, THIS PRODUCT WILL BE FREE FROM DEFECTS IN MATERIALS AND WORKMANSHIP.

WE LIMIT THE DURATION AND REMEDIES OF ALL IMPLIED WARRANTIES, INCLUDING WITHOUT LIMITATION THE WARRANTIES OF MERCHANTABILITY AND FITNESS FOR A PARTICULAR PURPOSE, TO THE DURATION OF THIS EXPRESS LIMITED WARRANTY.

SOME STATES DO NOT ALLOW LIMITATIONS ON HOW LONG AN IMPLIED WARRANTY LASTS, SO THE ABOVE LIMITATION MAY NOT APPLY TO YOU. OUR RESPONSIBILITY FOR DEFECTIVE GOODS IS LIMITED TO REPAIR OR REPLACEMENT AS DESCRIBED BELOW IN THIS WARRANTY STATEMENT.

WHO MAY USE THIS WARRANTY?

MAD-RAMPS (“we”) extend this limited warranty only to the consumer who originally purchased the product (“you”). It does not extend to any subsequent owner or other transferee of the product.

WHAT DOES THIS WARRANTY COVER?

This limited warranty covers defects in materials and workmanship of the MAD-RAMPS Pivoting Ramp System (the “product”) for the Warranty Period.

WHAT DOES THIS WARRANTY NOT COVER?

This limited warranty does not cover any damage due to: (a) transportation; (b) storage; (c) improper use; (d) failure to follow the product instruction or to perform any preventive maintenance; (e) modifications; (f) unauthorized repair; (g) normal wear and tear; (h) external causes such as accidents, abuse, or other actions or events beyond our reasonable control; (i) use of the Product for commercial or rental purposes; or (j) for any use of the product outside the United States.

WHAT IS THE PERIOD OF COVERAGE?

This limited warranty starts on the date of your purchase and lasts for one year (“Warranty Period”). The Warranty Period is not extended if we repair or replace the product. We may change the availability of this limited warranty at our discretion, but any changes will not be retroactive.

MR1400 MAD-RAMPS Pivoting Ramp System

Installation Instructions

WHAT ARE YOUR REMEDIES UNDER THIS WARRANTY?

With respect to any defective product during the Warranty Period, we will, in our sole discretion, either repair or replace the product (or the defective part) free of charge. We will also pay for shipping and handling fees to return the repaired or replacement product to you if we elect to repair or replace the defective product.

HOW DO YOU OBTAIN WARRANTY SERVICE?

To obtain warranty service, you must call (844) MAD-RAMP (844-623-7267) or email our Warranty Department at info@madramps.com during the Warranty Period.

LIMITATION OF LIABILITY

THE REMEDIES DESCRIBED ABOVE ARE YOUR SOLE AND EXCLUSIVE REMEDIES AND OUR ENTIRE LIABILITY FOR ANY BREACH OF THIS LIMITED WARRANTY. OUR LIABILITY UNDER NO CIRCUMSTANCES EXCEEDS THE ACTUAL AMOUNT PAID BY YOU FOR THE DEFECTIVE PRODUCT, NOR ARE WE UNDER ANY CIRCUMSTANCES LIABLE FOR ANY CONSEQUENTIAL, INCIDENTAL, SPECIAL OR PUNITIVE DAMAGES OR LOSSES, WHETHER DIRECT OR INDIRECT.

TECHNICAL SPECIFICATIONS

Product Length (fully assembled in highway travel position)	48 inches
Product Width (fully assembled in any position)	60 inches
Product Weight (fully assembled)	151 pounds
Maximum Load Capacity (lb.)	Supports gross machine weight of 1400 lbs. and supports vertical load of 800 lbs. once machine is loaded.

MR1400 MAD-RAMPS Pivoting Ramp System
Installation Instructions



MAD-RAMPS™

CONTACT US

(844) 623-7267 | info@madramps.com | www.madramps.com