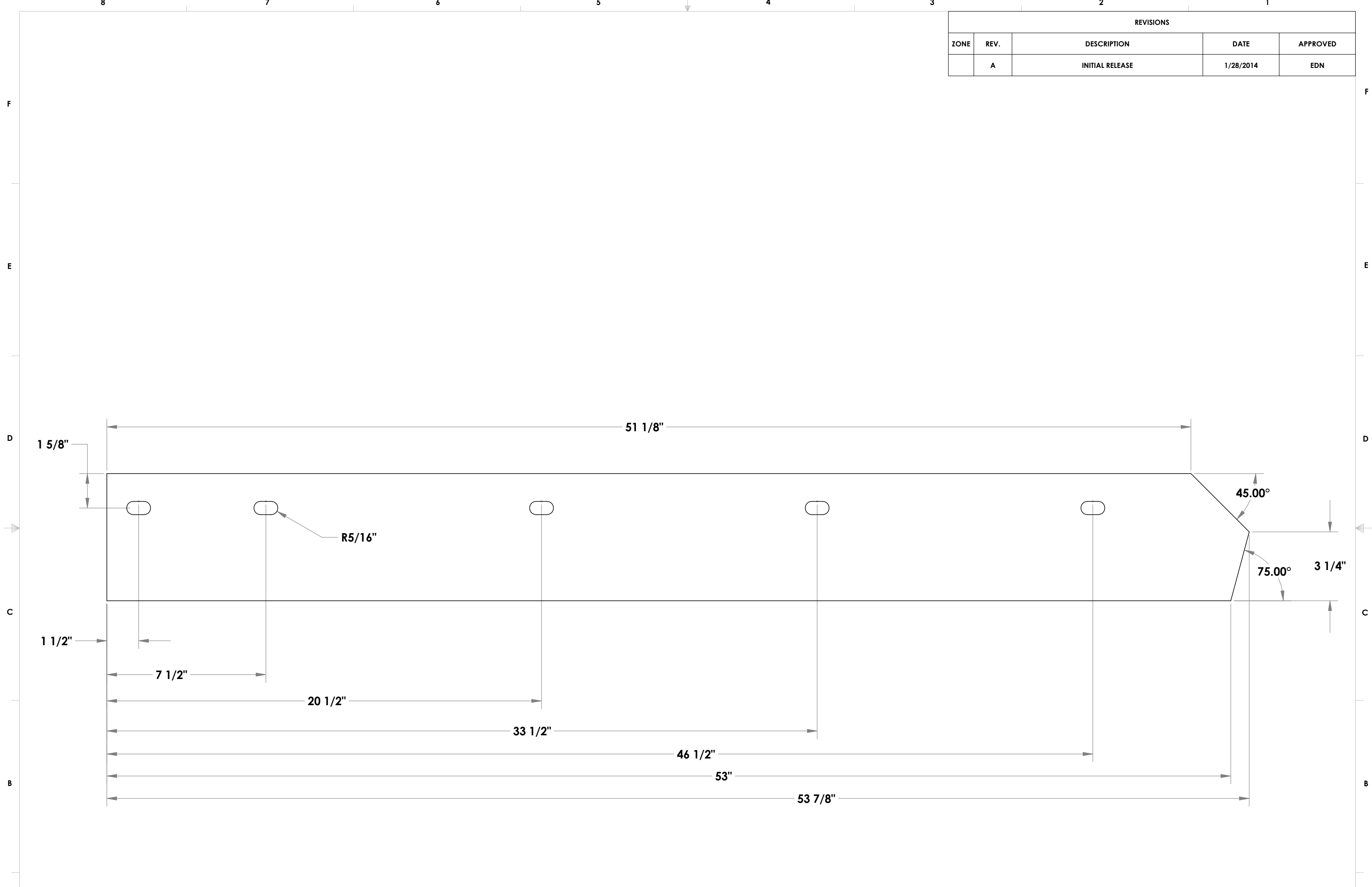


REVISIONS				
ZONE	REV.	DESCRIPTION	DATE	APPROVED
	A	INITIAL RELEASE	1/28/2014	EDN



NOTES:
 MATERIAL IS 1/2" C1080
 USE 5/8" SLOT PUNCH
 ROUGH CUT ON HYD-MECH 54"

PROPRIETARY AND CONFIDENTIAL
 THE INFORMATION CONTAINED IN THIS
 DRAWING IS THE SOLE PROPERTY OF
 RIGID HITCH, INC. ANY
 REPRODUCTION IN PART OR AS A WHOLE
 WITHOUT THE WRITTEN PERMISSION OF
 RIGID HITCH, INC. IS
 PROHIBITED.

UNLESS OTHERWISE SPECIFIED:		NAME	DATE
DIMENSIONS ARE IN INCHES		DRAWN	E. NASH 9/30/2016
TOLERANCES:		CHECKED	B. WIRTH 9/30/2016
FRACTIONAL ± 1/8"		ENG APPR.	E. NASH 9/30/2016
ANGULAR: MACH ± 1° BEND ± 1°		MFG APPR.	E. NASH 9/30/2016
TWO PLACE DECIMAL ±.060		Q.A.	
THREE PLACE DECIMAL ±.010		COMMENTS:	
INTERPRET GEOMETRIC TOLERANCING PER:			
MATERIAL			
1/2" C1080			
FINISH			
BLACK POWDER			
DO NOT SCALE DRAWING			

1304762		TITLE:
RIGID HITCH INCORPORATED		
SIZE	DWG. NO.	REV
C	RCE-V5412	A
SCALE: 1:8	WEIGHT:	SHEET 1 OF 1