



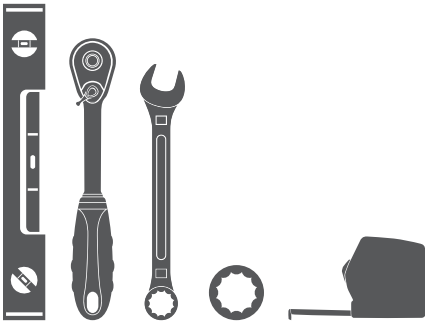
# S223015-2 INSTALLATION MANUAL

## Parts List

1	Driver / left side bar
1	Passenger / right side bar
1	Driver / left front bracket
1	Passenger / right front bracket
1	Driver / left rear bracket
1	Passenger / right rear bracket
24	Hex bolt, 10mm x 35mm
8	Hex nut, 10mm
24	Lock washer, 10mm
32	Flat washer, 10mm ID x 30mm OD x 1.5mm
8	Clip nut, 10mm

## Tools Required

Ratchet	17mm socket
Level	Tape measure
Wrench, 17mm	



## Level of Difficulty

Easy

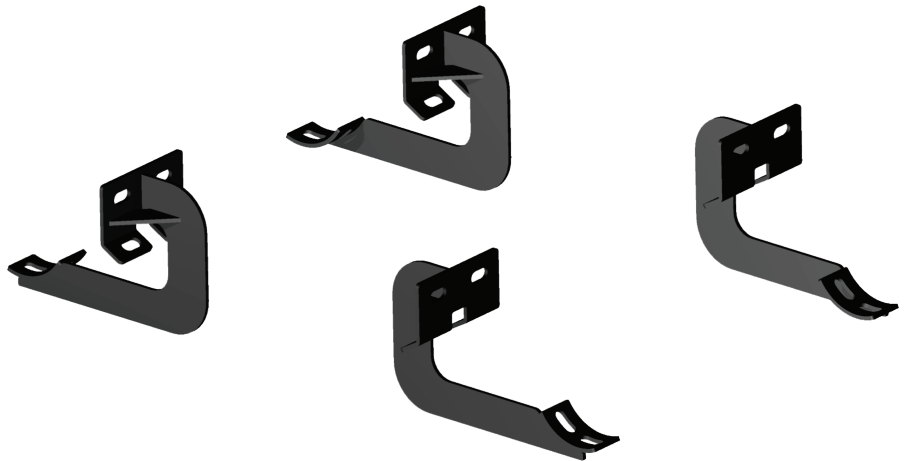


Scan  
for helpful  
install tips

## Product Image



## Brackets and Hardware



## Notes and Maintenance

Before you begin installation, read all instructions thoroughly

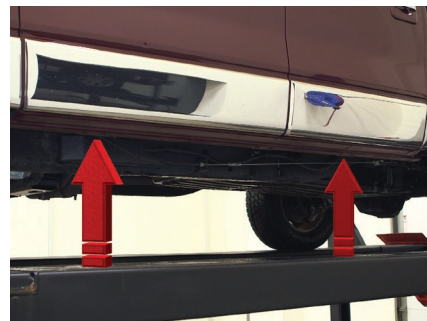
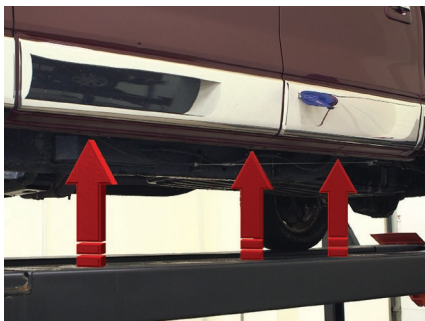
Proper tools will improve the quality of installation and reduce the time required

To protect the product, wax after installing. Regular waxing is recommended to add a protective layer over the finish. Do not use any type of polish or wax that may contain abrasives that could damage the finish.

For stainless steel and aluminum, polish may be used to clear small scratches and scuffs on the finish. Mild soap may be used also to clean the product.

### Step 1

Starting on the driver side, locate the three mounting locations along the body. This installation will use the front and rear mounting points.



### Step 2

The mounting brackets are specific to a front or rear mounting location. When mounting the brackets, have the cradle facing toward the middle of the truck for proper placement.



### Step 3

Starting at the front, remove the factory tape or plug covering the mounting holes on the inner rocker panel.

Insert a 10mm clip nut onto each mounting point.



### Step 4

Lift the bracket into place and attach with a 10mm hex bolt, locking washer and flat washer into the rocker panel and mounting tabs.

Snug the hardware, but do not fully tighten.



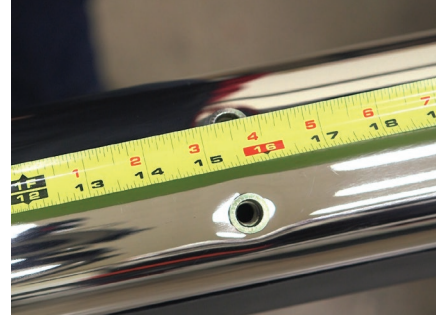
### Step 5

Repeat this for the passenger side bracket.



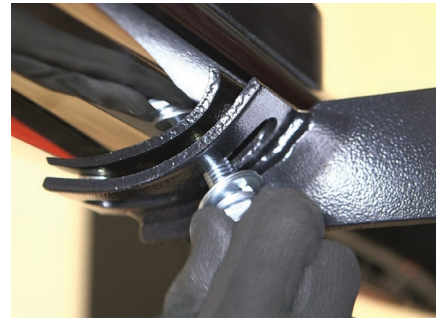
### Step 6

To determine the front of the side bar, measure from the end of the side bar to the center of the rivet nut. This measurement should be 15 1/2".



### Step 7

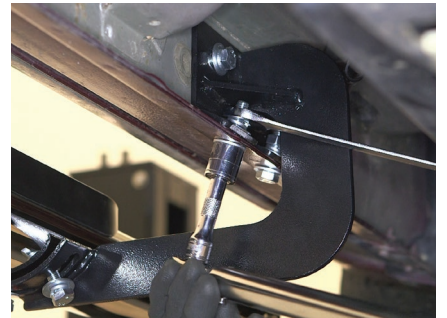
Lift the new side bar into place and attach with a 10mm bolt, locking washer and flat washer.



### Step 8

Check for level and adjust if necessary.

Once aligned, tighten all hardware.



### Step 9

Repeat this entire process on the passenger side.



### Step 10

Remember to do periodic inspections to make sure that all hardware is secure and tight.

To protect your investment, we recommend you apply a layer of nonabrasive wax.

Congratulation on the installation of your brand new Aries 4" oval side bars.

