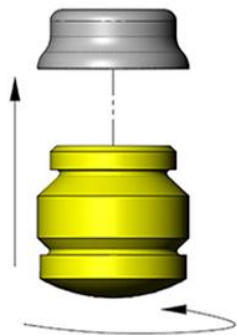


SumoSprings Front

Suspension Enhancement
Savana~Express Van 1500/2500/3500/4500 Van & Cutaway [2007 ~ present]
~includes all-wheel drive options~
SumoSprings SSF-204-47/54



Comparison OE vs.
SSF-204-54



SSF-204-47



OE Bumpstop
removed



OE Bumpstop

SSF-204-54 installed



**Reduce Sag
Increase Stability**

Refer to SumoSprings application guide for part selection www.supersprings.com [Tech line #866-898-0720]
SumoSprings enhance load carrying capability, handling & towing. Never exceed vehicle manufacturer's GVWR rating.

SumoSprings Front

Suspension Enhancement

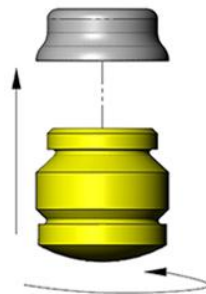
GM 3500 Chassis Cab [2011 ~ present]

SumoSprings Part# SSF-204-54



Comparison OE vs.
SSF-204-54

OE Bumpstop
removed



OE Bumpstop

SSF-204-54 installed



**Reduce Sag
Increase Stability**

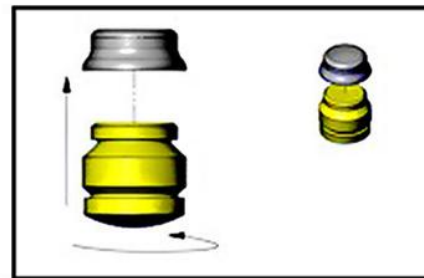
Refer to SumoSprings application guide for part selection www.supersprings.com [Tech line #866-898-0720]
SumoSprings enhance load carrying capability, handling & towing. Never exceed vehicle manufacturer's GVWR rating.

SumoSprings **Front**

Suspension Enhancement
Dodge Durango 2x4, 4x4 [1998 ~ 2003]
SumoSprings Part# SSF-204-47



Comparison



Installation



SSF-204-47 Installed

Refer to SumoSprings application guide for part selection www.supersprings.com [Tech line #866-898-0720]
SumoSprings enhance load carrying capability, handling & towing. Never exceed vehicle manufacturer's GVWR rating.

Installation Instructions

- 1) Park vehicle on level hard surface. Engage emergency brake. Place blocks in front and behind rear wheels to prevent rolling. Observe all safety precautions and wear safety glasses.
- 2) Raise front of vehicle allowing the axle to hang freely. Support the frame using safety jack stands.
- 3) Using the hammer, drive the screwdriver blade between the OEM bumper and the socket until it bottoms-out. Lift the screwdriver and the bumper will "pop" out. Set aside in the event that the SumoSprings are ever removed.
- 4) Align SumoSpring into the socket and place 3/4"-1" thick board to place between strike area and the SumoSpring. Lower the jack allowing the weight of the vehicle to drive the bumper into the socket and then jack vehicle back up and remove the board.
- 5) Repeat steps three through four on the other side of the vehicle.
- 6) Jack up vehicle, remove safety jack stands.
- 7) Carefully lower vehicle to the hard surface. Remove the blocks in front and back of the rear wheels.
- 8) Release emergency brake.
- 9) Fill out warranty card and send to SuperSprings. The warranty card is on the reverse side of this page.

Tool List

- Floor Jack 1
- Jack Stands 2
- Wheel Blocks 4
- Hammer 1
- Large Flat Head Screwdriver 1
- Lumber (2" W x 3/4"-1" H Board) 1

Parts List

- SumoSprings #SSF-204-47 2
- or SumoSprings #SSF-204-54 2

Important Notice.

- 1) For easy installation please read instructions completely first and have all necessary tools available.
- 2) We recommend that this installation be done by a professional or persons with sound mechanical knowledge.
- 3) SumoSprings are designed to work with the original factory springs only. If they have been replaced with aftermarket springs then please consult with SuperSprings International at 866-898-0720.
- 4) These instructions are meant as a guide for the installation of SumoSprings. SuperSprings International assumes no liability for the actual installation process. Installers should apply common automotive safety practices when raising, lowering and working on vehicles.
- 5) SumoSprings are designed to enhance the vehicles load carrying performance and road handling however it does not authorize (or recommend) loading beyond the manufacturer's GVWR specifications.
- 6) For technical support contact SuperSprings International at 866-898-0720.

To prevent damage to the vehicle and to ensure safety, do not exceed the maximum load recommended by the vehicles manufacturer (GVWR).